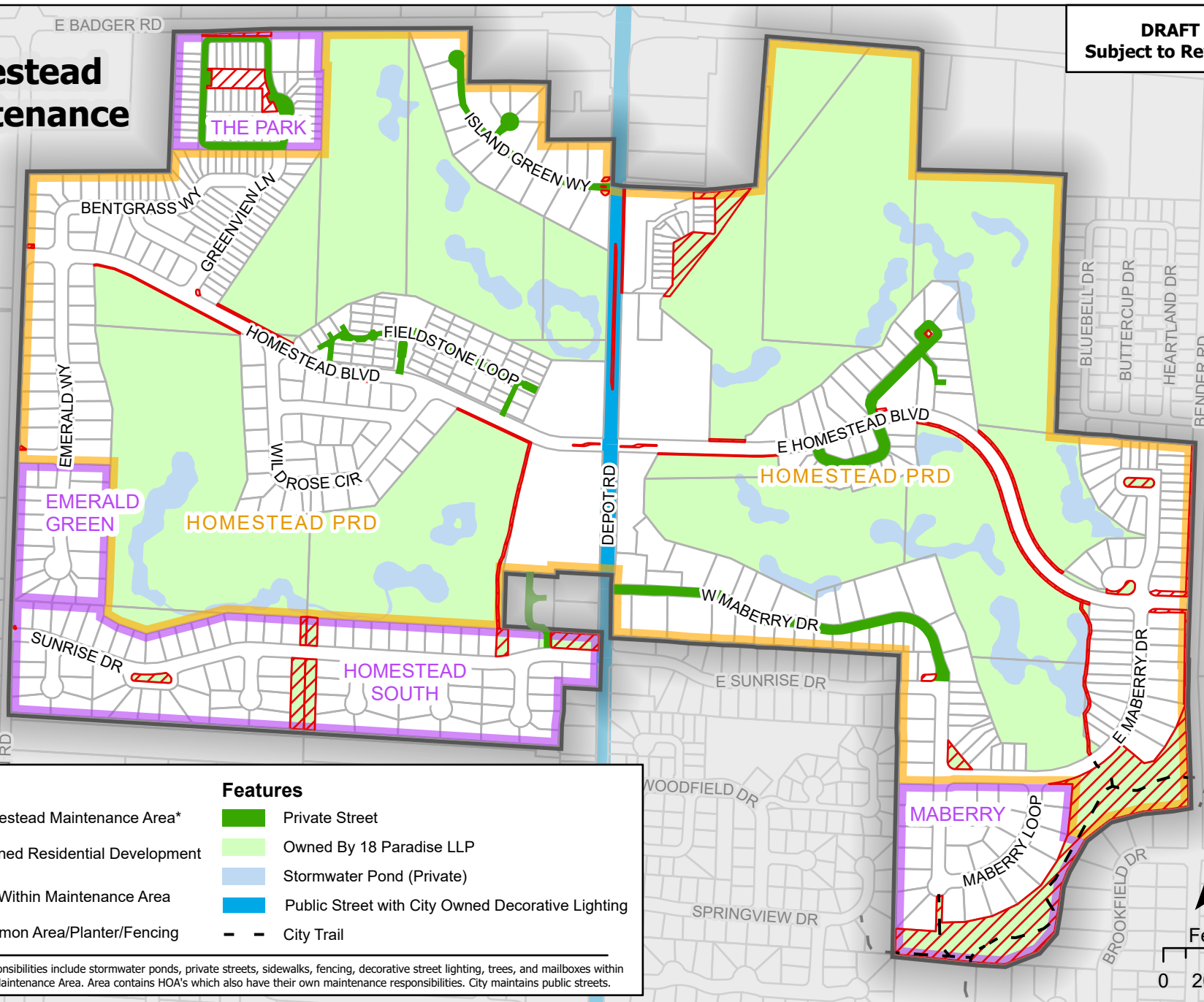


DRAFT
Subject to Revision

Homestead Maintenance Area



Features	
	Homestead Maintenance Area*
	Planned Residential Development
	Plat Within Maintenance Area
	Common Area/Planter/Fencing
	Private Street
	Owned By 18 Paradise LLP
	Stormwater Pond (Private)
	Public Street with City Owned Decorative Lighting
	City Trail

*18 Paradise's responsibilities include stormwater ponds, private streets, sidewalks, fencing, decorative street lighting, trees, and mailboxes within the Homestead Maintenance Area. Area contains HOA's which also have their own maintenance responsibilities. City maintains public streets.

Maps provided or made available are produced from data maintained in the City of Lynden Geographic Information System ("GIS") by the Public Works Department. For further information regarding maps, data sources, or the availability of GIS products and services please contact the City of Lynden Public Works Department at (360) 354-3446.
 USE OF CITY OF LYNDEN'S GIS DATA AND MAPPING IMPLIES THE USERS AGREEMENT WITH THE FOLLOWING STATEMENT: The City of Lynden disclaims any warranty associated with this data/map for any particular purpose, either express or implied. No representation or warranty of any kind is made concerning the accuracy, currency, completeness, or quality of this data/map. Any user of this data/map assumes all responsibility for its use and accuracy, and further agrees to release and hold the City of Lynden harmless from and against any damage, loss, or liability arising from any use of this data/map.